



# DECserver 900TM

Achieve high-density, high-performance, multi-protocol connectivity of your data center's serial devices



Confidently manage serial data center devices locally, or remotely establish reliable communication with Digital Networks' DECserver 900TM.

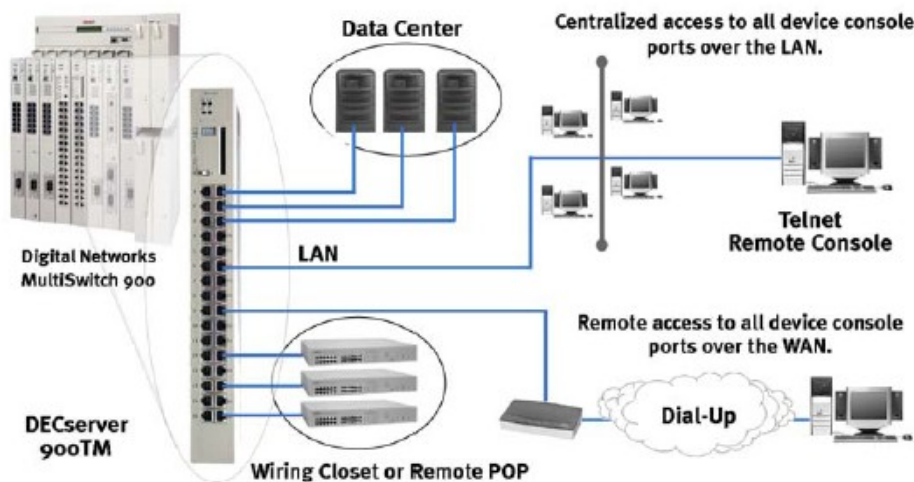
## What you can do

- > Network data center serial devices over an Ethernet LAN.
- > Connect terminals and printers in traditional device-to-host environments.
- > Provide dial-up remote access for IT staff's management of network resources.
- > Take advantage of self-booting operation when you install your own Flash Card.
- > Support speeds up to 115.2 Kbps using AUI and 10BaseT Ethernet.

Supporting four-wire software-selectable modem control, the DECserver 900TM operates in the Digital Networks MultiSwitch™ 900, or as a rackmount or standalone module with the DEChub™ ONE docking station.

## How does the DECserver 900TM fit into the network?

Operating as a standalone device or in the MultiSwitch 900, the DECserver 900TM allows you to remotely establish reliable communication with virtually any serial device in your data center.





## Feature Set

- > Supports up to 32 connections per unit
- > Per port line speed up to 115.2Kbps, supporting the fastest V.34 asynchronous modems
- > Provides software-selectable modem control options to support any modem
- > Multi-protocol support for IP, LAT, PX, and AppleTalk networks
- > Supports Telnet, LAT, TN3270, Rlogin, LPD, and DNS
- > Supports SLIP, CSLIP, and PPP with AUTOLINK
- > Supports Telnet Listener, Raw TCP Listener, and Reverse LAT
- > Supports PAP, CHAP, RADIUS, Kerberos V4, RSA SecurID, and CBCP or standard dial-back
- > FLASH RAM allows operating software to be stored onboard (no network load host required)
- > MultiSwitch 900 form factor provides high availability via hot-swap and redundant power
- > Standalone configuration

## Ordering Information

DSRVZ-MC      DECserver 900TM Remote Access Server with DNAS CD-ROM kit (KT-DNAS3-00) with license and softcopy documentation.

## Standalone Configuration Options

DEHUA-\*\*      DEChub One Docking (Required)

## Miscellaneous Spare Parts and Cables

H8585-AAG      DB9 Null-modem adapter (BN25G patch cord required)

BN25G-xx      Straight-through Cat 5 patch cord, RJ45 on each end  
(xx = length in meters: -01, -03, -04, -07, -0B, -0E)

BN25G-xx-5E      Straight-through Cat 5E patch cord, RJ45 on each end  
(xx = length in meters: -01, -03, -04, -07, -0B, -0E)

H0345-AAG      2MB removable Flash Card pre-loaded with DNAS software

KT-DNAS3-00      DECserver Network Access Software v3.x CD-ROM kit with license and softcopy documentation.

\*\* To order the appropriate country kit, replace the \*\* variable with:

CA = US/Canada/Japan; CD = Denmark; CE = United Kingdom; CI = Italy; CK = Switzerland; CT = Israel;  
CX = Central Europe; CZ = Australia; DJ = India/South Africa

## Specifications

### Ethernet

10BaseT RJ45 or  
Thinwire via Backplane Only

### Asynchronous Ports

32-RJ45  
EIA-423

### Asynchronous Port Speed

115.2 Kbps

### Modem Control

4-wire software selectable  
CTS, DSR, RTS, and DTR  
RI, DCD, DSRs and DTR

### RAM

4 MB

### Flash

2MB flash card external slot  
(Optional)

### Physical

Height: 4.45cm (1.75 in)  
Width: 44.45 cm (17.5 in)  
Depth: 5.25 cm (6.0 in)  
Weight: 1.8 kg (4 lb)

### Power

20W @ 5Vdc  
7W @ 15Vdc

### Operating Environment

Temperature: 5° C to 50° C  
(41° F to 122° F)  
Max rate of change: 20° C/hr  
(36° F/hr)  
Relative Humidity: 10% to 95%  
(non-condensing)  
Altitude: Sea level to 4900m  
(16000 ft)