

DECserver 716 & 732

Maintain your network's stability and availability from anywhere, at anytime



The DECserver 716 and 732 provide the in-band and out-of-band access you need to confidently connect to, monitor and control any serial device in your network.

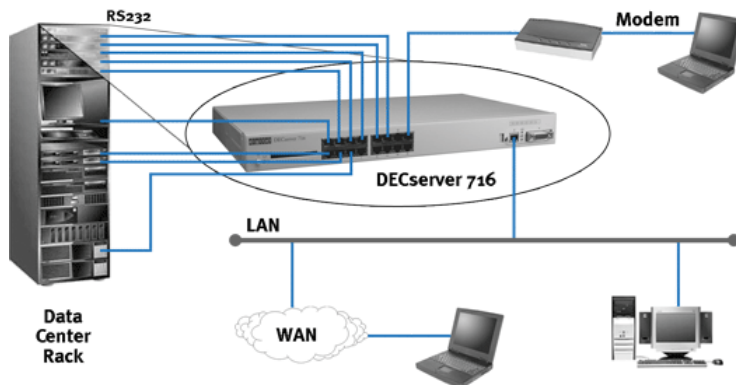
What you can do

- > Access, configure, monitor, manage, troubleshoot, diagnose and repair networks and systems wherever you are, whenever you want.
- > Gain access to attached serial devices through in-band management from anywhere on the LAN/WAN.
- > Connect to serial network devices even if the network is down with out-of-band management.
- > Reduce response time to events, minimize downtime, and increase productivity.
- > Support simultaneous remote access connections.
- > Provide multiple user access to a single port.
- > Manage your serial device network with embedded DNAS (DECserver Network Access Software).

Designed for rackmount or standalone configurations, we are extremely proud of the fact that many of our installations have been operating in some of the world's harshest environments for over 10 years without failure.

How do the DECserver 716 and 732 fit into the network?

The DECserver 716 and 732 allow you to locally or remotely establish communication with virtually any serial device, providing you with a reliable connection to manage your network.





Feature Set

- > 16 and 32 RJ45 ports in a 1U rackmount or standalone unit
- > Supports throughput rates of up to 115 Kbps per port
- > Wide array of authentication features including RADIUS, Kerberos V4, RSA SecurID, PAP, CHAP, and CBCP or standard dial-back
- > Multiple Telnet sessions per port
- > Multi-protocol support, e.g. IP, LAT
- > Supports Telnet, LAT, TN3270, Rlogin, LPD, and DNAS
- > Supports LPD, Telnet listener/server, raw TCP listener/server, and Reverse LAT
- > Dial up protocols supported; SLIP, CSLIP, and PPP with AUTOLINK

Ordering Information

DSRVW-JAR	DECserver 716 with console cable (BN25G-03-5EG) and DNAS CD-ROM kit (KT-DNAS3-00) with license and softcopy documentation. Flash card (H0345-AAG) not included.
DSRVW-JCR	DECserver 716 with console cable (BN25G-3-5EG) and DNAS CD-ROM kit (KT-DNAS3-00) with license and softcopy documentation. Flash card (H0345-AAG) included.
DSRVW-KAR	DECserver 732 with console cable (BN25G-03-5EG) and DNAS CD-ROM kit (KT-DNAS3-00) with license and softcopy documentation. Flash card (H0345-AAG) not included.
DSRVW-KCR	DECserver 716 with console cable (BN25G-03-5EG) and DNAS CD-ROM kit (KT-DNAS3-00) with license and softcopy documentation. Flash card (H0345-AAG) included.

Miscellaneous Parts & Cables

H8585-AAG	DB9 Null-modem adapter provides access to DECserver physical console port when used with a BN25G patch cord from a PC.
BN25G-xx-5EG	Straight-through Cat 5 patch cord with RJ345 on each end. (xx = length in meters: -01, -03, -04, -07, -0B, -0E)
KT-DNAS3-00	DNAS: DECserver Network Access Software, v3.x CD-ROM kit with license and softcopy documentation.
H0345-AAG	2MB removable flash card pre-loaded with DNAS software.

Specifications

Ethernet
AUI
10Base-T

Asynchronous Ports
16 – RJ45
32 – RJ45

Asynchronous Port Speed
115.2 Kbps

Modem Control
4-wire software selectable; CTS, DSR, RTS and DTR – or – RI, DCD, DSRS and DTR.
(Selection made per port via software.)

Flash
Optional 2MB removable card

Physical
Height: 43.69 mm (1.72 in)
Width: 438.15 mm (17.25 in)
Depth: 254.0 mm (10.0 in)
Weight: 3.0 kg (6.1 lbs)

Power Specifications
Line voltage¹
100–120 V rms/220–240 V rms

Frequency
50/60 Hz

Line current
1.0 A rms/.5 A rms

Power
42W

¹The DECserver automatically selects the voltage range.

Operating Environment
5° C (41° F) to 50° C (122° F)
Relative Humidity

10% to 95% (non-condensing)

Environmental
RoHS Compliant

Vnetek Communications, LLC

20 North Wentworth Avenue
Londonderry, NH 03053
Toll Free: 877-341-9594 Telephone 603-216-6000 Web: www.vnetek.com

DigitalNetworks

Proud owner of Digital Networks